

Removal Guide—EU/UK: Plasterboard / Alternate Material

NOTE: The 22 System is a departure from conventional cover plate systems, and requires a licensed electrician and precise and skilled craftsmanship during installation. If you have never installed a 22 System device, we recommend a practice installation.

This instruction manual is designed for the following products: 22.3.XX

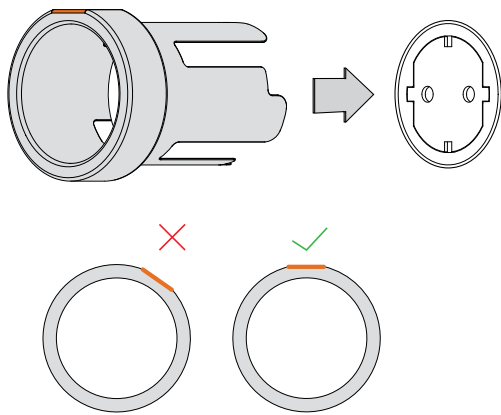
You can install 22 System with a plastic or metal electrical box. Please refer to your local electrical and building authorities to determine what kind of boxes and raceways are allowed for your building.

The included sticker with QR code shall be added to the circuit directory panel recording the location of the 22 System Tool.

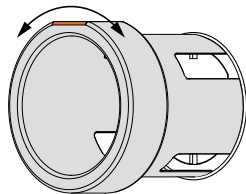
1. WARNING

When installing a product connected to the line voltage, please ensure the power is disconnected at the circuit breaker.

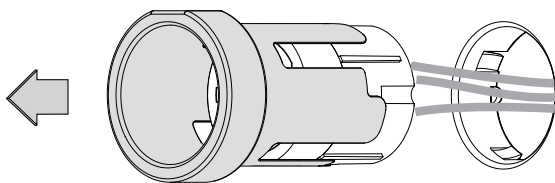
Align the flat section of 22 System Tool to top of the device.



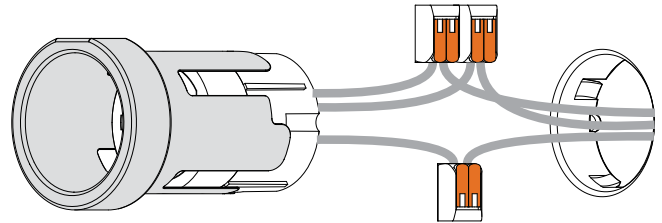
2. Push 22 System Tool carefully into the reveal. If needed, gently rotate the tool left and right.



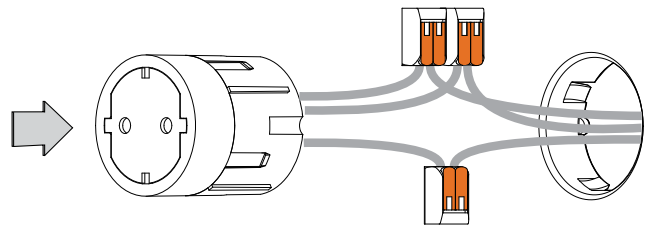
3. Carefully pull out the device by tension fit.



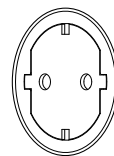
4. Carefully withdraw connectors and conductors from the interior of the electrical box and perform any necessary repairs. As connections may differ between devices, see individual spec sheet for more details.



5. When repairs are completed, carefully insert connectors and conductors back into the interior of the electrical box. Then, insert the device back into the opening and ensure all four locking tabs are engaged.



6. Touch up plasterboard and paint if needed.



To purchase a 22 System Tool, visit:



EUR



GBP